



Overview

Many Raveon products shipped since late 2012 have a built-in Bootloader that allows their firmware to be updated using Raveon's *RadioManger* software.

M7 data radio modems and GPS transponders with firmware D50 and higher may be updated using *RadioManger*. Only version RadioManger version 5.0 and higher supports bootloading firmware into Raveon products.

The RadioManager may be downloaded from the Raveon website at <http://www.raveon.com/software.html>.

The Updating Process

Here is a summary of the firmware updating process using the built-in Bootloader. If your Raveon product does not support bootloading, you will need to first install the Bootloader into it. See AN180 for information on how to install the Bootloader.

Step 1. Turn on the product

Step 2. Run *RadioManger* (version 5.0 or higher) on a computer

Step 3. Connect the product to the computer, using an RS232 serial port or telnet connection

Step 4. Tell *RadioManager* to "Discover Radio"

Step 5. Once *RadioManager* has discovered the radio, tell it to send the new firmware version to the product.

Step 1. Turn on the product

Connect power to the product.

Step 2. Run RadioManger

On a Windows PC, install and run Raveon's *RadioManager* software. RadioManager must be version 5.0 or higher.

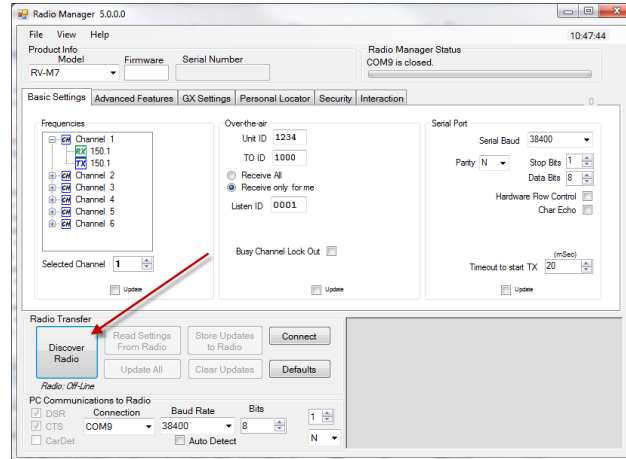
Step 3. Connect the product to the computer

Connect your products RS232 serial port to the computer running RadioManger. Many computers do not have RS232 serial ports, so you can use a USB-to-serial bridge adaptor available from Raveon and many on-line suppliers.

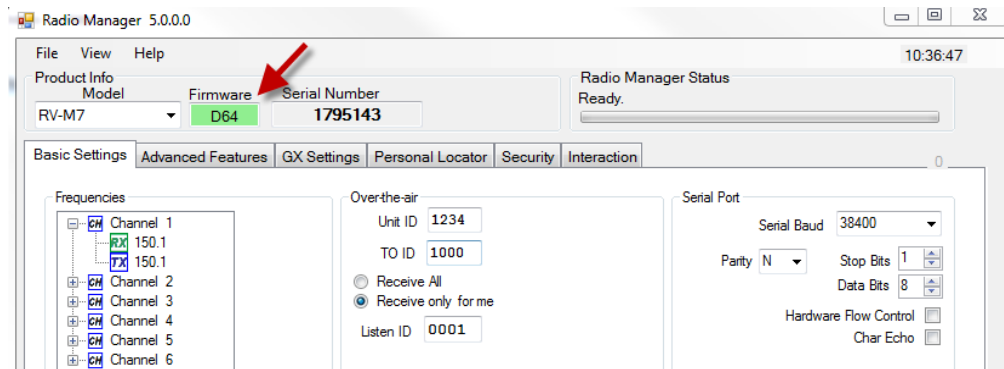
Step 4. “Discover Radio”

On the bottom of *RadioManager’s* main screen, select the correct Connection to the COM port you will use to communicate with the product. Set the serial Port Baud rate to match the serial port baud rate of the product you have connected to it.

Click “Discover Radio” button.



Once RadioManager discovers your radio, it will display the Firmware version and serial number of the radio on the top of its main screen. The Firmware version box will be green if the firmware in the discovered radio is capable of being updated using RadioManager.

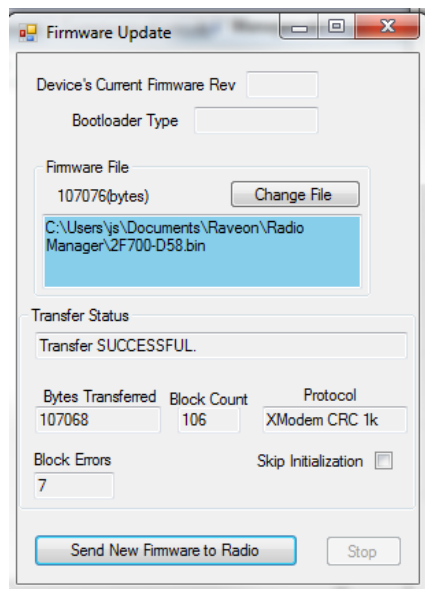


Step 5. Upload New Firmware

If you are certain you wish to update the firmware in your Raveon product, click on

File > Update Firmware

from the main RadioManger screen. A dialog box will pop-up allowing you to select the new firmware image to upload to the radio. Select the firmware version you wish to send to the radio. Once you select the firmware version, a Firmware Update dialog box will pop up, displaying the new file name you selected, and the file size.



To send the file to the radio, click on the “Send New Firmware to Radio” button. RadioManager will begin transferring the new firmware to the product. Once the transfer is complete, the Transfer Status box will say “Transfer SUCCESSFUL”. The product will re-boot and begin operation with the new firmware. We suggest cycling the power to restart the product.

For Further information, please contact Raveon Technologies at the address below, or visit www.raveon.com

Raveon Technologies Corporation

2320 Cousteau Court
Vista, CA 92081
sales@raveon.com
760-444-5995